



Cycle Routes in Newcastle-under-Lyme

Annabel Chell

Head of Connectivity Strategy

20th June 2023



Local Cycling and Walking Infrastructure Plans

Technical Guidance for Local Authorities

April 2017

Gear Change

A bold vision
for cycling
and walking



Cycle Infrastructure Design

Local Transport Note 1/20
July 2020





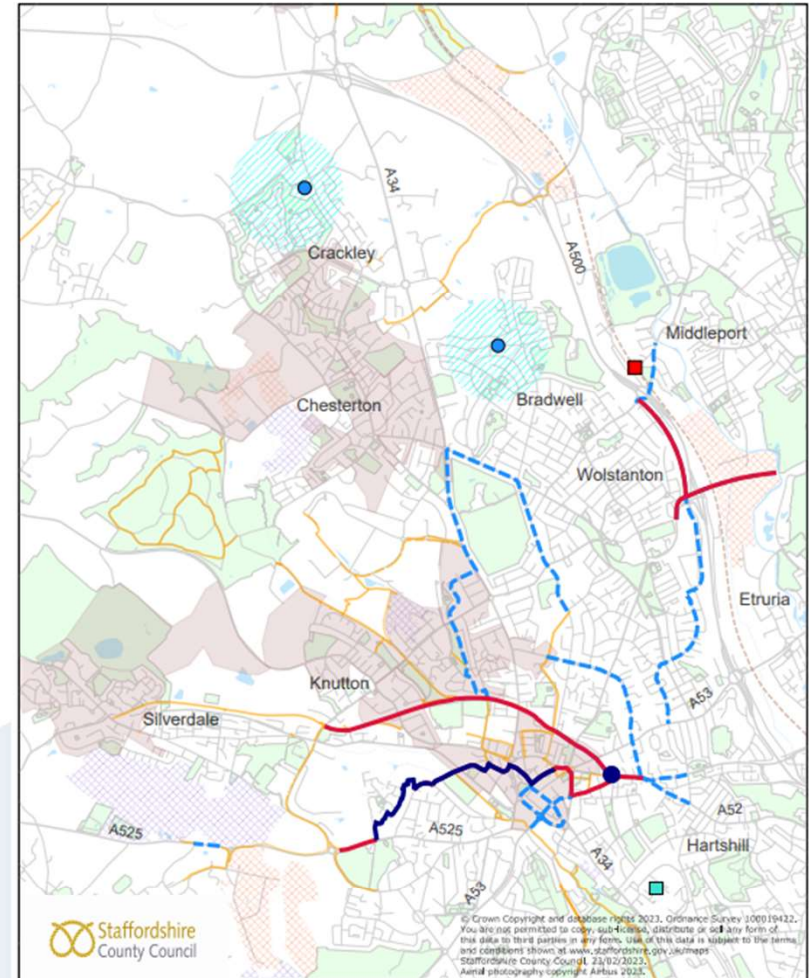
Newcastle-under-Lyme Town Centre

Local Cycling and Walking Infrastructure Plan 2021 - 2031

March 2021



Two Waters Way, Stafford

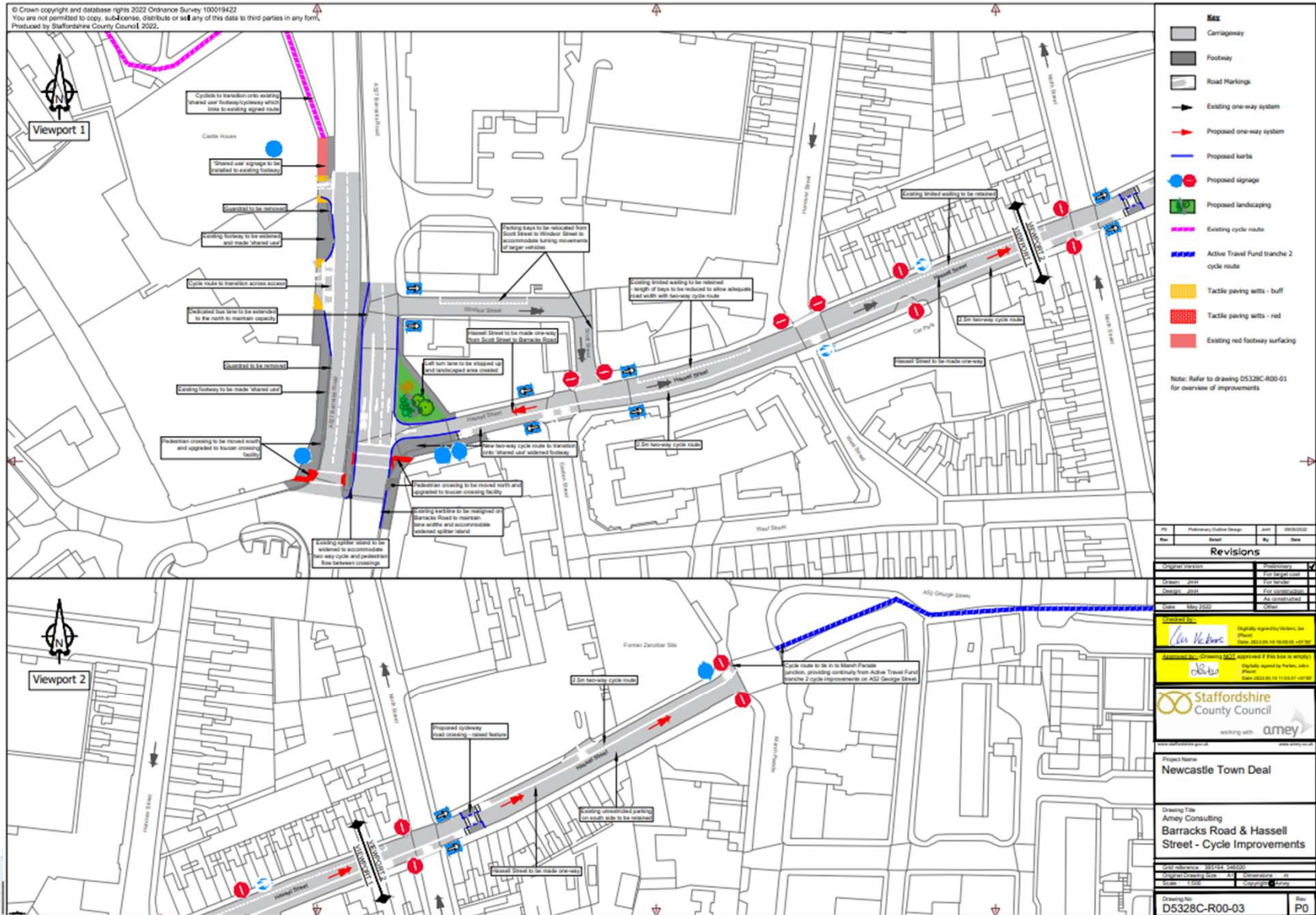


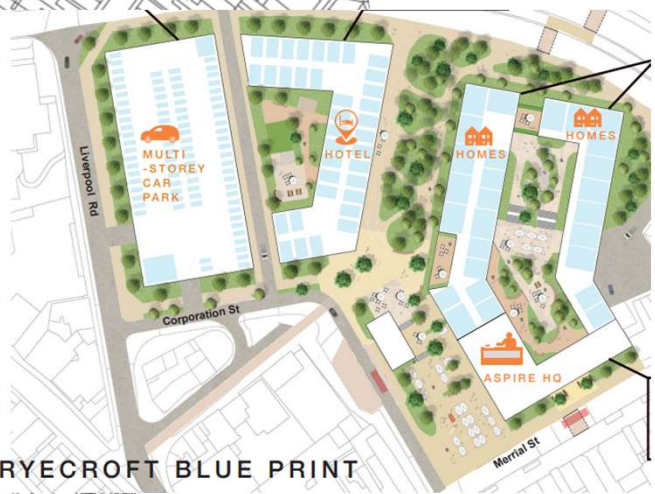
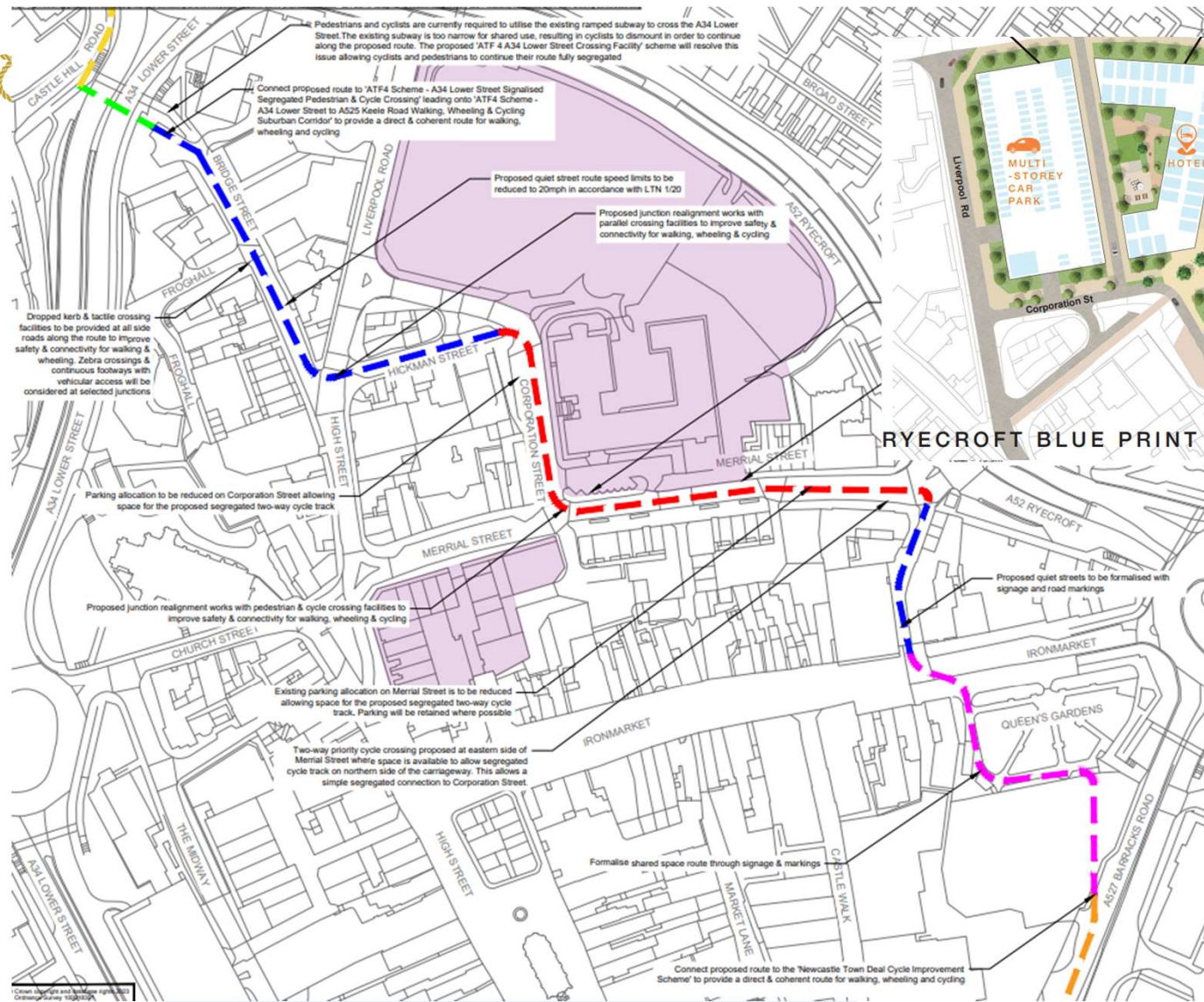
Active Travel Fund 4: Newcastle-under-Lyme

- | | | |
|-----------------------------------------------------------------------------------------------------------------------------|-------------------------------------------------------------------------------------------------------------------------------|----------------------------------------------------------------------------------------------------|
|  Proposed Residential Sites |  Existing Cycle Network |  Key Schools |
|  Proposed Employment Sites |  Active Travel Fund for Proposed Schemes |  Rail Station |
|  Future Access for All School Projects |  Committed or Completed Cycle Routes |  Hospital |
|  Top 25% Area of Deprivation |  Future Schemes | |

Towns Fund

Hassell
Street /
Barracks
Road Route

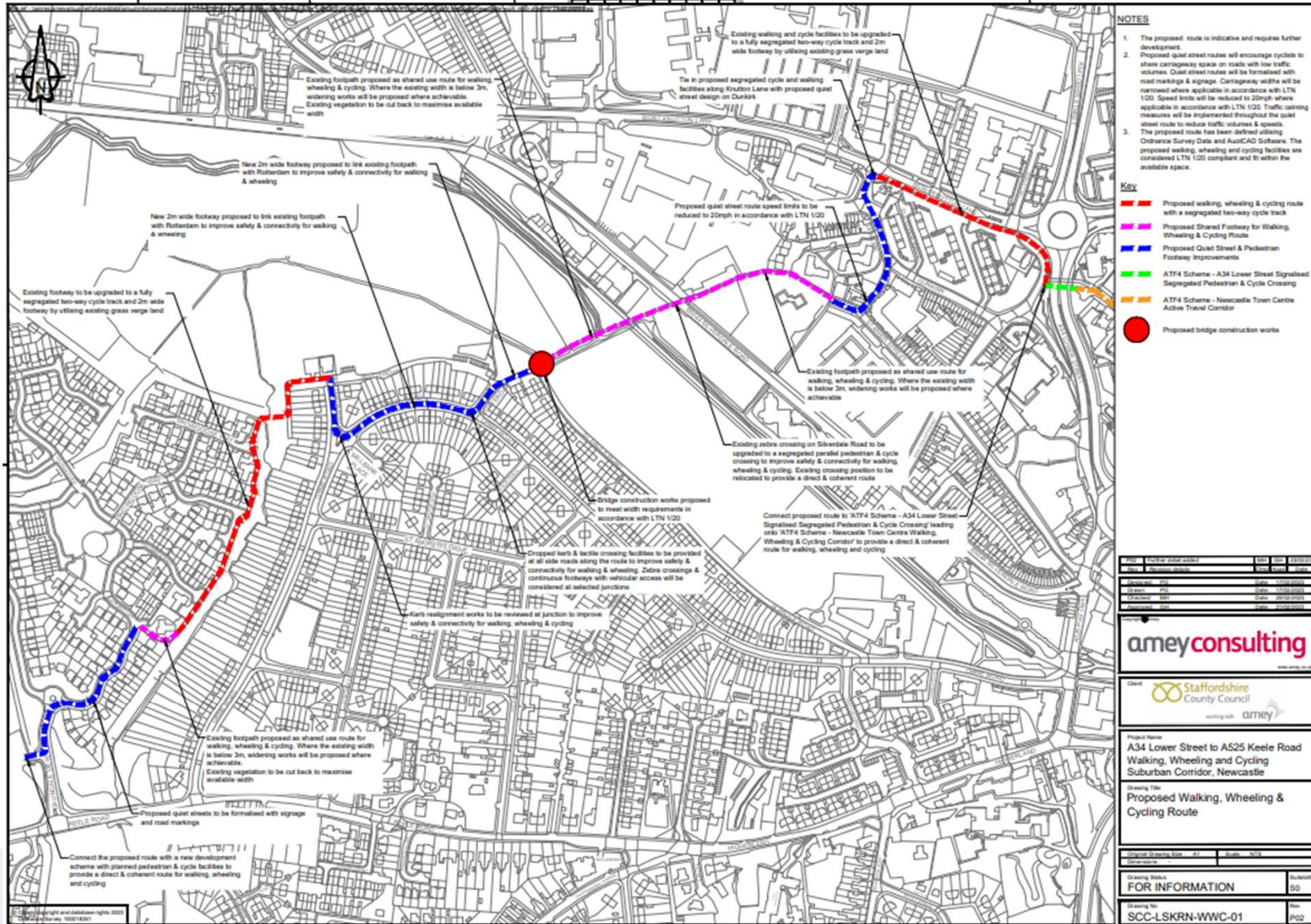




RYECROFT BLUE PRINT

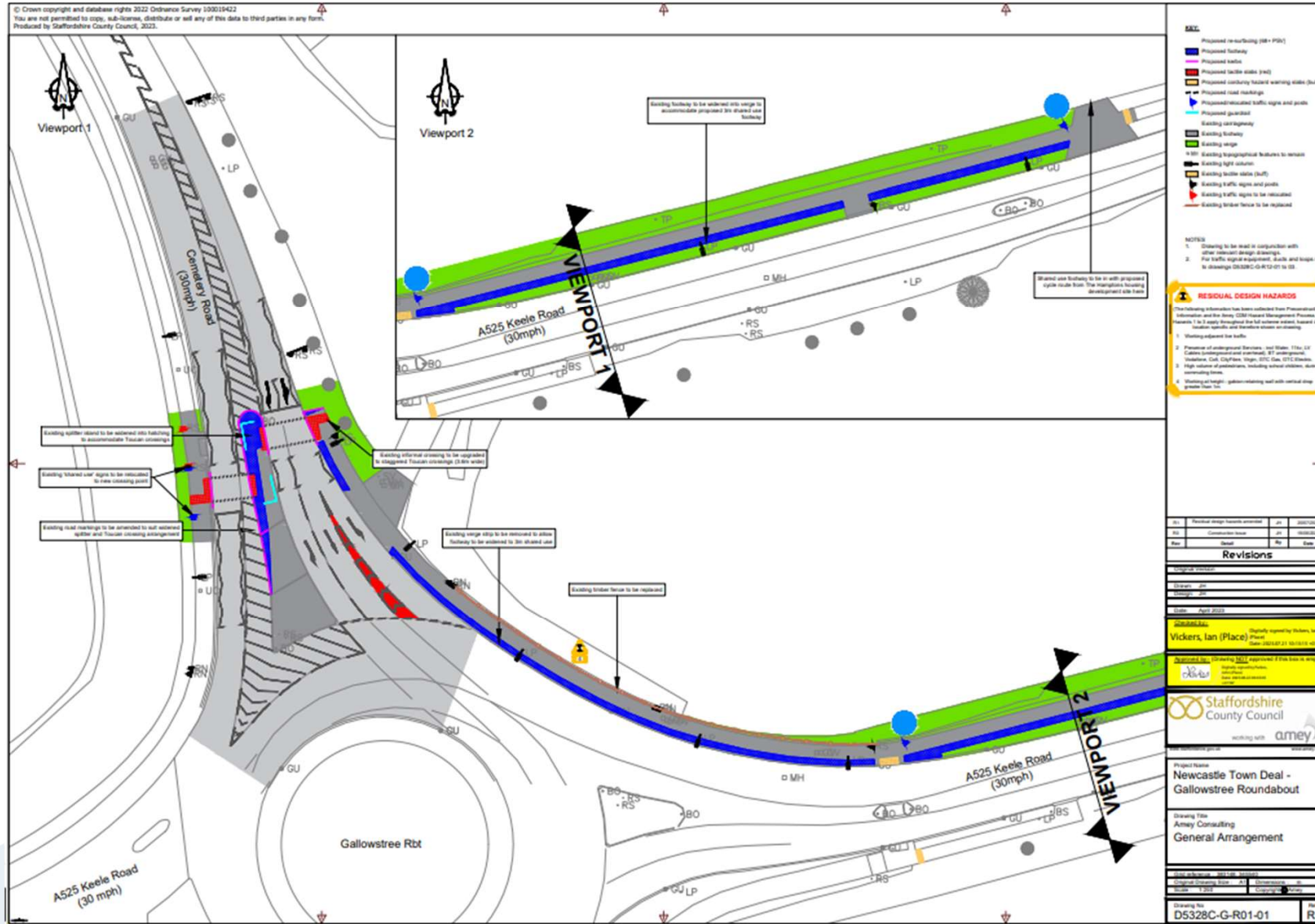
Proposed Town Centre Route

Proposed A34 to A525 Suburban Route

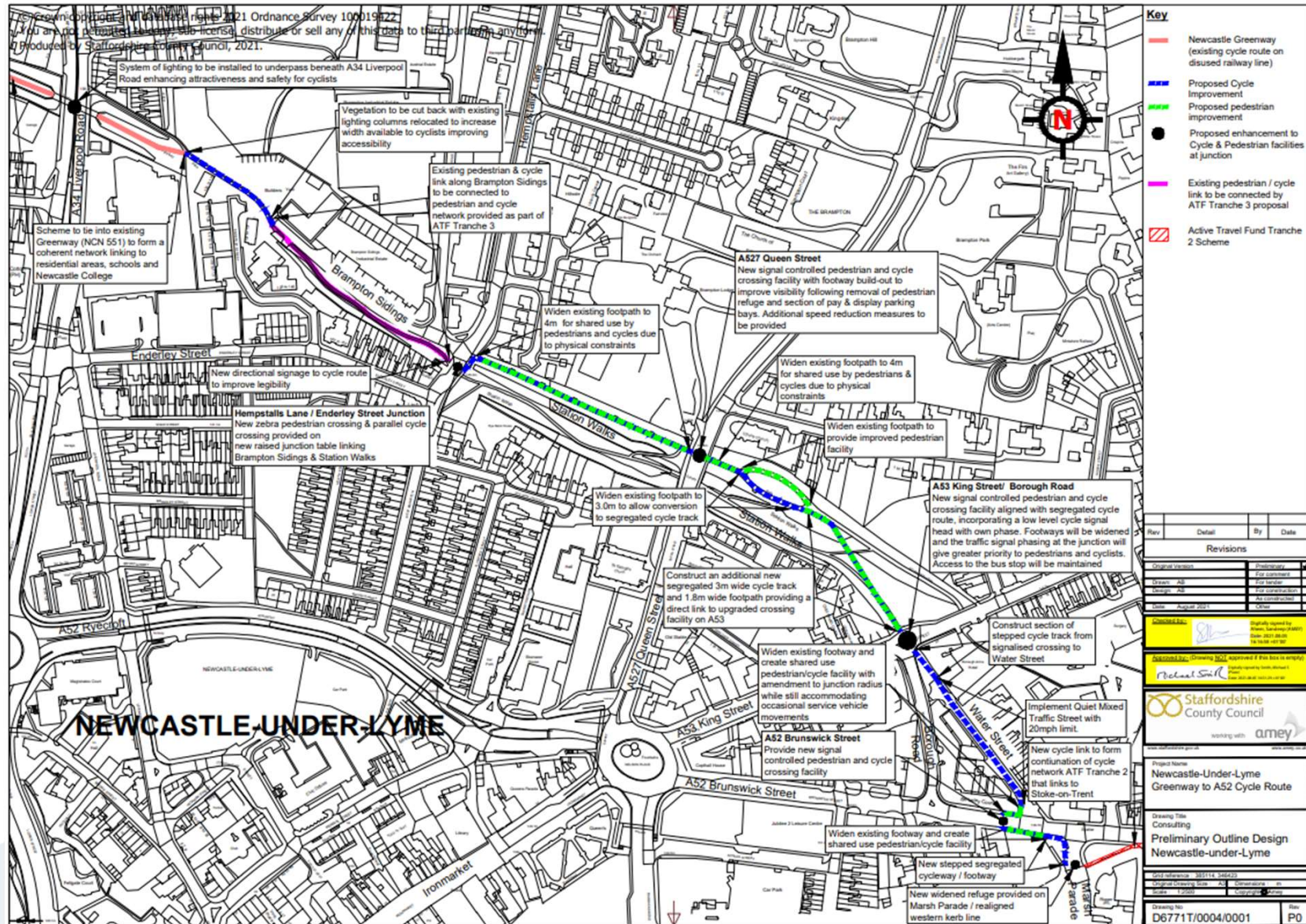


Gallowstree Lane junction

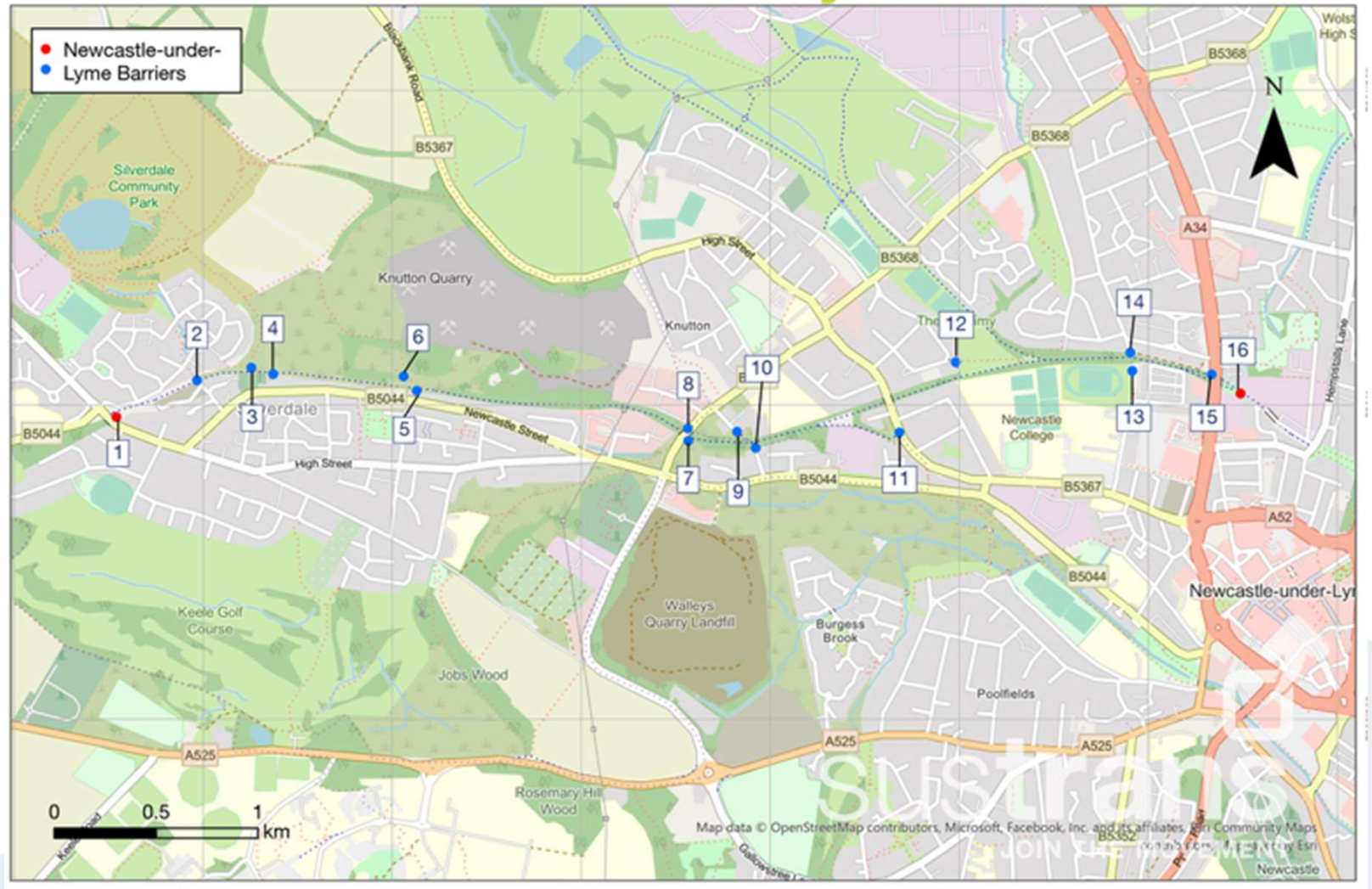
Footway widening and Toucan crossing



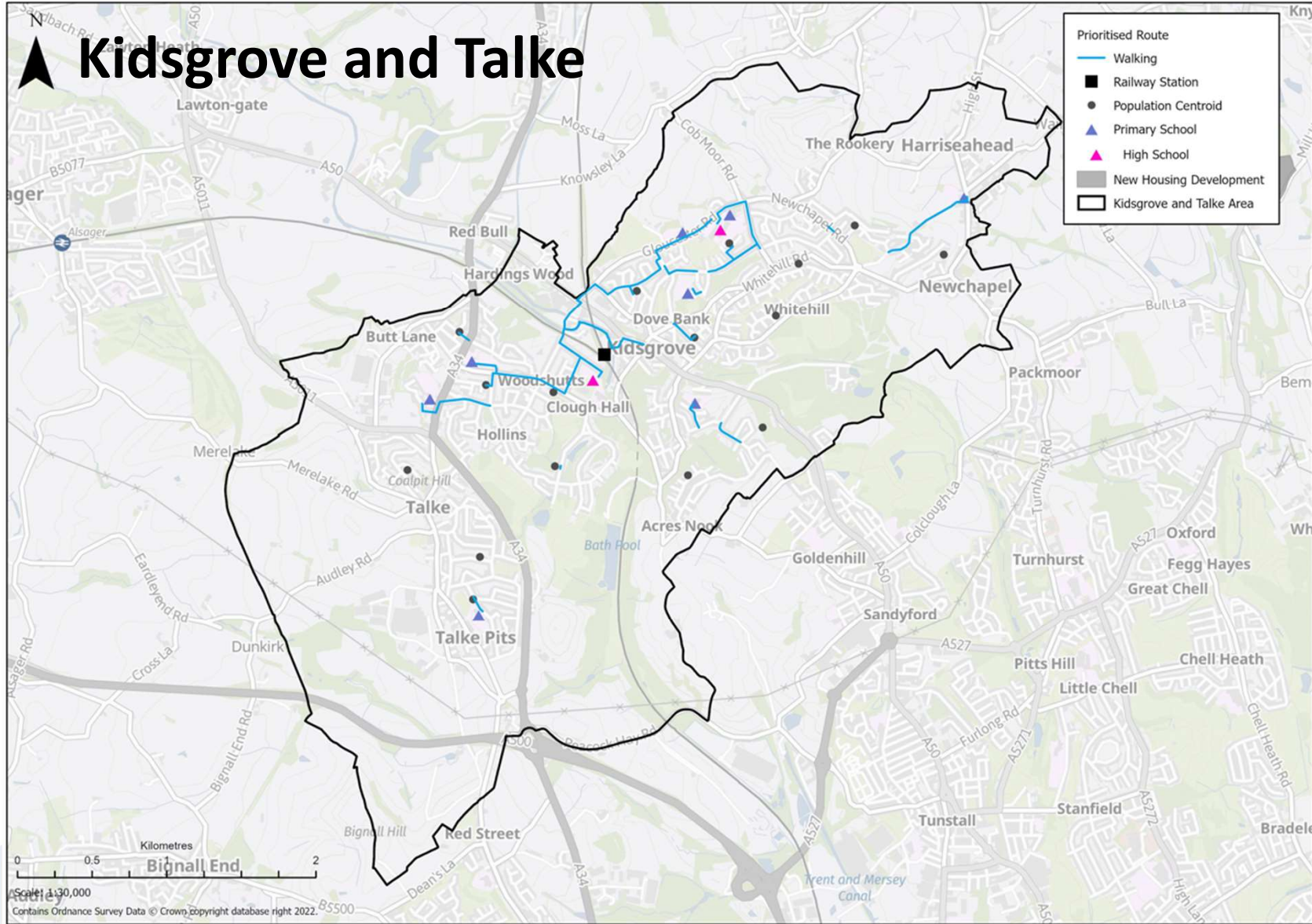
Greenway to A52 route via Station Walks



Silverdale Greenway Barriers



Using GIS
analysis to
prioritise
walking routes
in our smaller
towns



School Streets



Any Questions?

